

Actual Images of Site



Get More Out Of Life In Our **Spacious Villas.**

Own a fabulous lifestyle in Lucknow's finest integrated township today.



Perfecting The Art Of Building

The Eldeco Group has been at the forefront of Real Estate development in North India since 1975. The group is synonymous with timely and quality delivery in a number of cities like Lucknow, Kanpur, Agra, Noida, Greater Noida and other parts of NCR of Delhi. Carrying more than 35 years of expertise in construction and real estate development, Eldeco has delivered more than 200 projects spanning townships, high-rise condominiums, industrial estates, malls and office complexes. In addition, 30 projects are in various stages of active execution. The aggregate delivered area stands at more than 40 million sq.ft with more than 25000 satisfied customers. Currently apart from the towns mentioned above, Eldeco is developing projects in Panipat, Sonapat, Ludhiana, Jhansi, Neemrana and Jalandhar. The unique 1200 acres* state-of-the-art Eldeco Sidcul Industrial Park at Sitarganj, Uttarakhand is Eldeco's flagship project in the industrial sector.

Eldeco's transparent and principle driven business philosophy has been widely recognized. The group's business activities rest on the principle of high quality, superior construction technology and high consumer satisfaction. Eldeco stands firm in its commitment to 'creating value and cementing trust' and is headed towards ever-greater success.



*1 acre= 4047 sq.mtr.



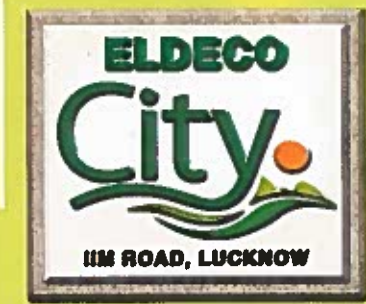
Eldeco Saubhagyam
Raibareilly Road, Lucknow



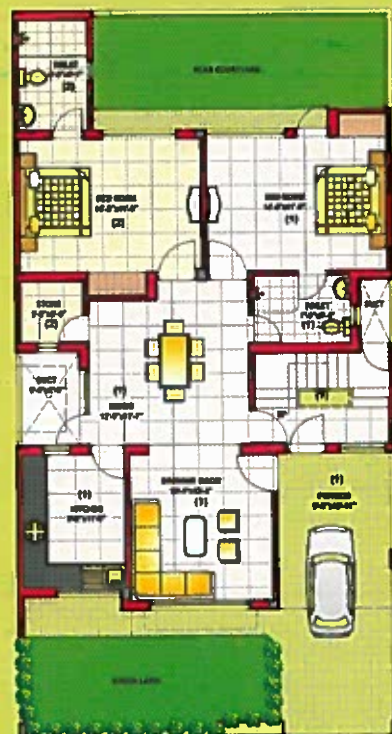
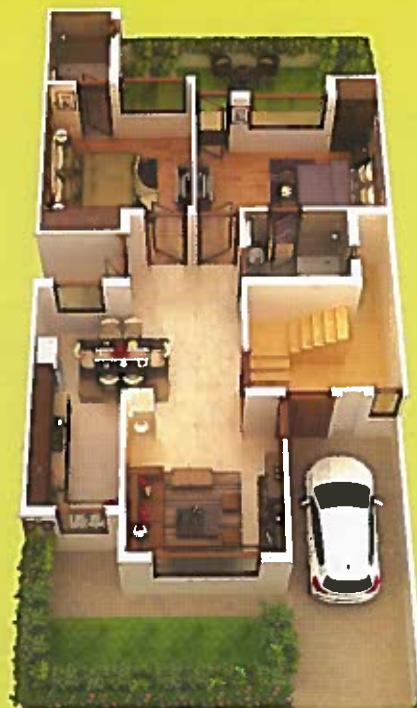
Eldeco Elegante
Gomti Nagar, Lucknow



Eldeco Eternia
Sitapur Road, Lucknow



Floor Plans



Category - 1
Category - 2

TYPE - C

Plot Area : 1802.43 sq. ft.

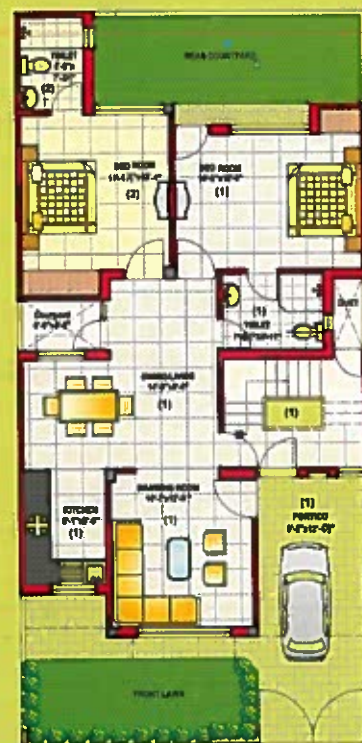
Plot Size : 30'x60'

Cat.-1 Built Up Area (1) : 968.00 sq. ft.

Cat.-2 Built Up Area (1+2) : 1240.00 sq. ft.

Disclaimer :

- The areas and plans shown here are subject to change.
- 1 sq.ft. = 0.093 sq.mt. 10.764 sq.ft. = 1.196 sq.yd. and 3.28 ft = 1 mt.
- All dimensions shown in feet inches are close approximation to metric dimensions.
- The dimensions and super area mentioned above may vary from unit to unit. Please check exact dimensions with marketing team.



Category - 1
Category - 2

TYPE - D

Plot Area : 1500.07 sq. ft.

Plot Size : 26'-3"x57'-2"

Cat.-1 Built Up Area (1) : 870.00 sq. ft.

Cat.-2 Built Up Area (1+2) : 1070.00 sq. ft.



Away from the cramped up city life, find a high-end residential township that flaunts a perfect blend of urban living and green spaces. Spread over 133 acres*, Eldeco City is strategically located amidst clean and serene environment, off Sitapur road near IIM. With a large portion dedicated to greenery, each villa in this township is perfected for functionality and design.

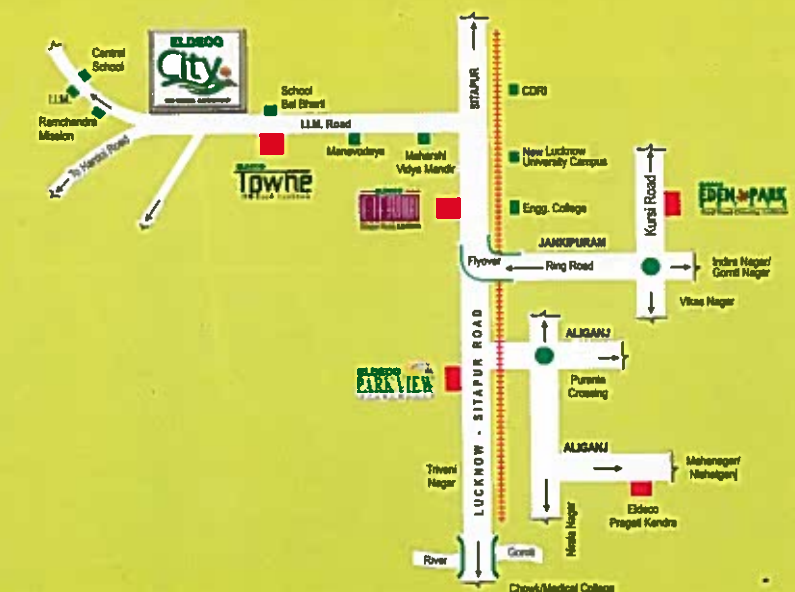
Project Attractions:

- Six type of independent expandable villas
- Over 1500 multistorey apartments
- Maximum green areas
- Freehold property
- Electrification through underground cabling
- Uninterrupted power supply
- Convenient shopping with schools inside the township

Premium Features:

- Landscaped central park, jogger's park, children's park
- Club with swimming pool
- Convenient shopping complex & schools proposed within the township
- Gated compound with boundary wall

Location Plan



Distance of Eldeco City from :

Sitapur Road	2.0 km.
Jankipuram	3.5 km.
Purania Crossing	6.5 km.
Kapoorthala	7.5 km.
Mahanagar Gole Market	8.8 km.

*1 acre= 4047 sq mtr.

Note : Map not to scale.